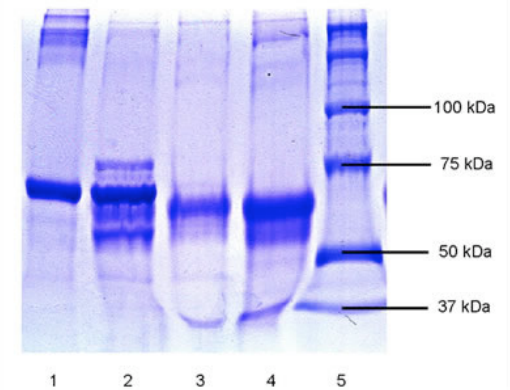
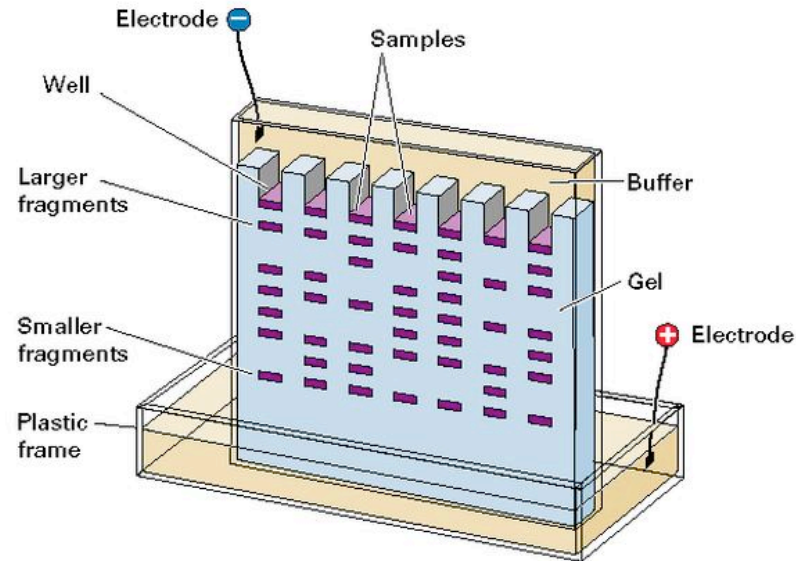
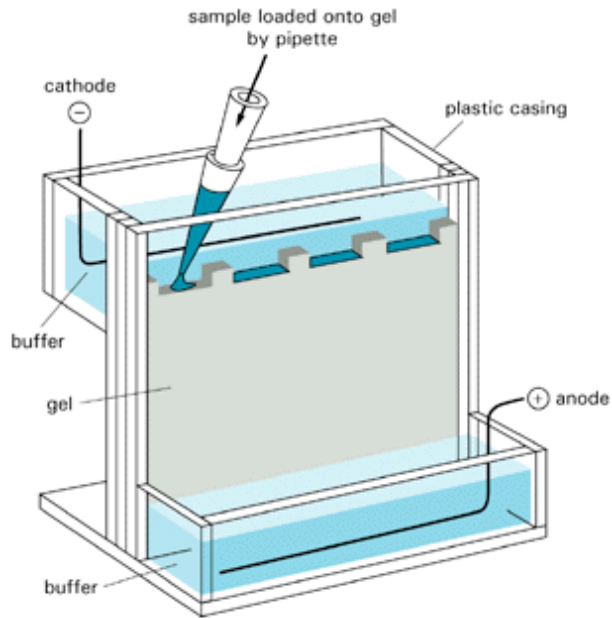


SDS-PAGE

SDS = detergent

Polyacrylamide Gel Electrophoresis

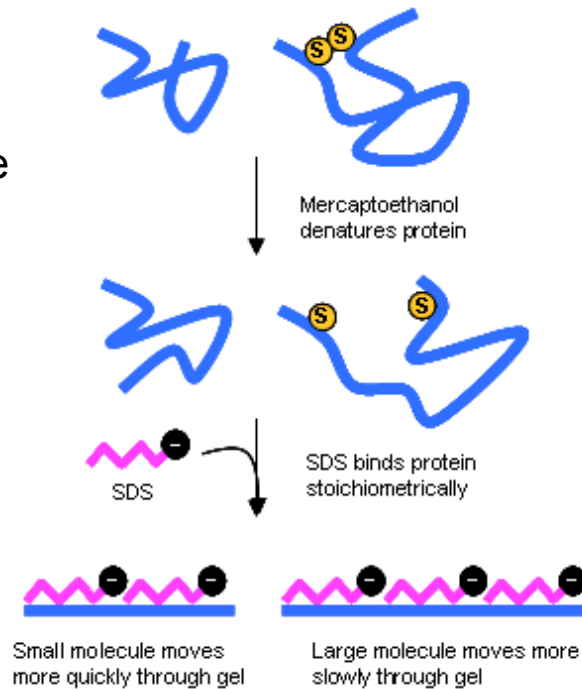


Sample Buffer:

SDS

Bromphenol Blue

Glycerol



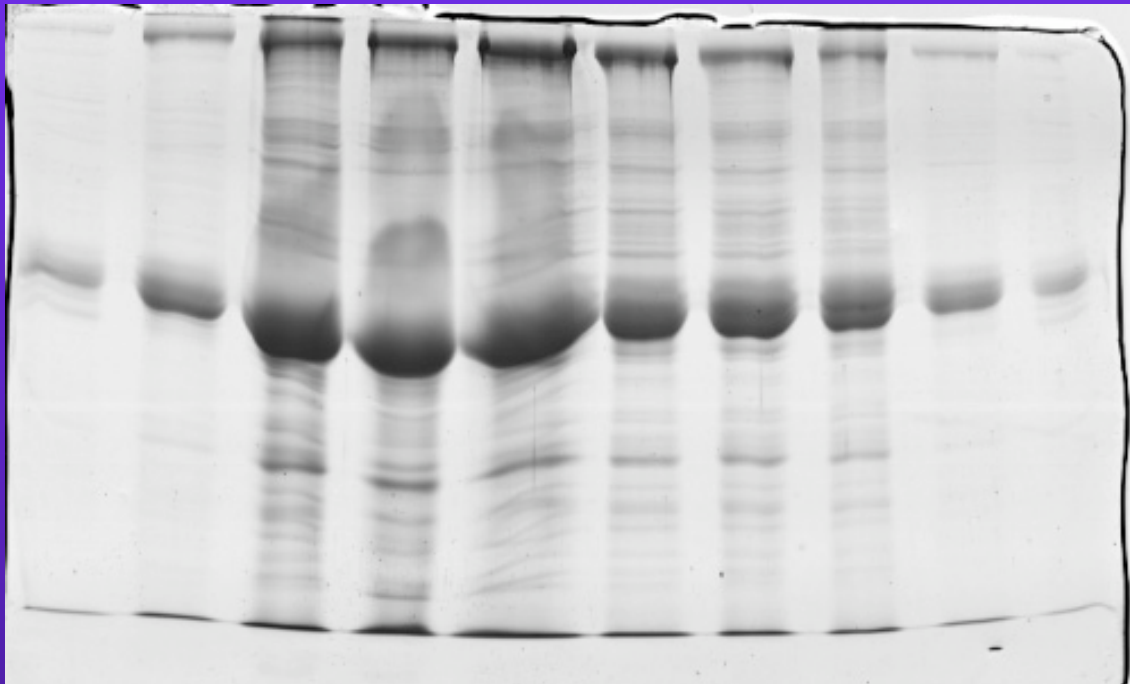
Reducing Sample Buffer:

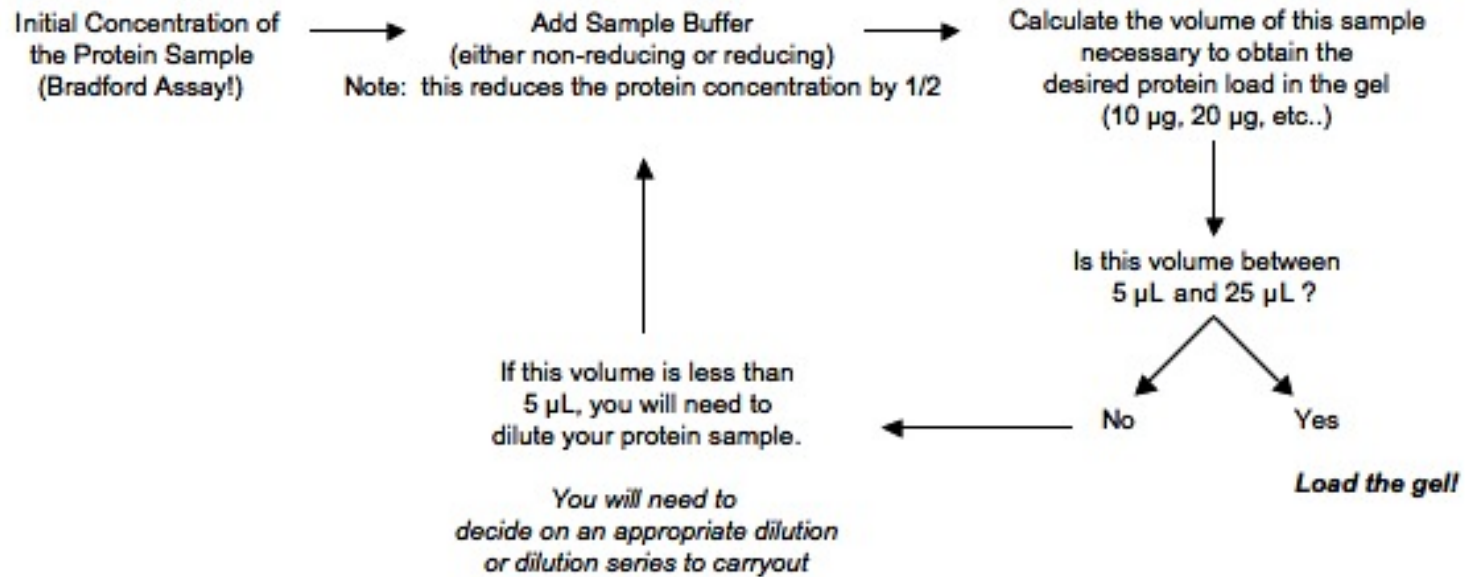
SDS

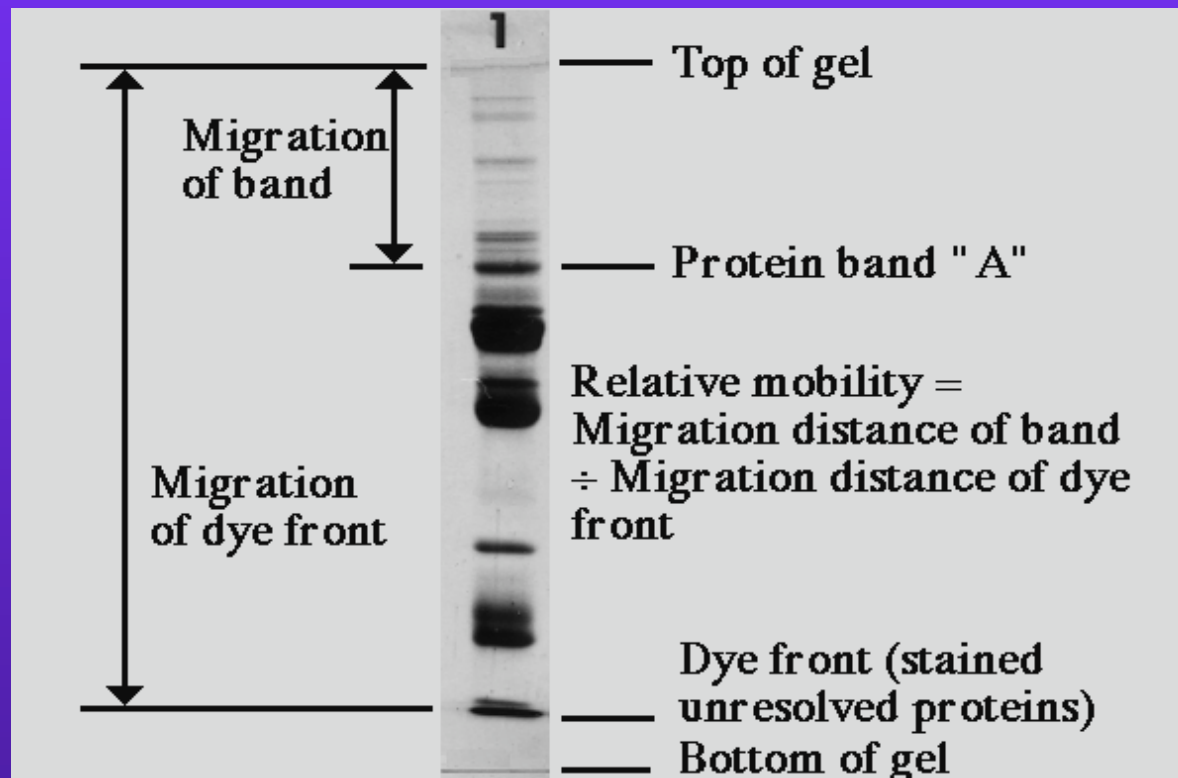
Bromphenol Blue

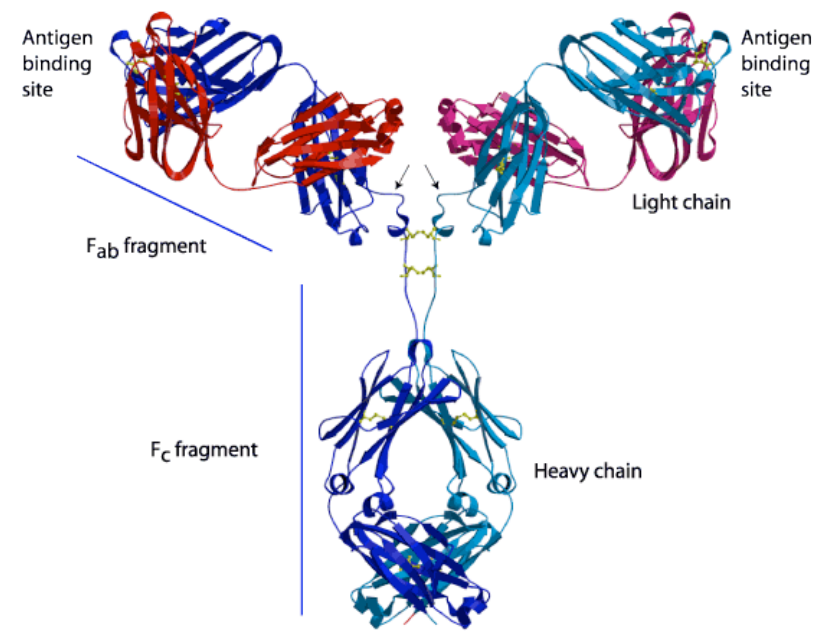
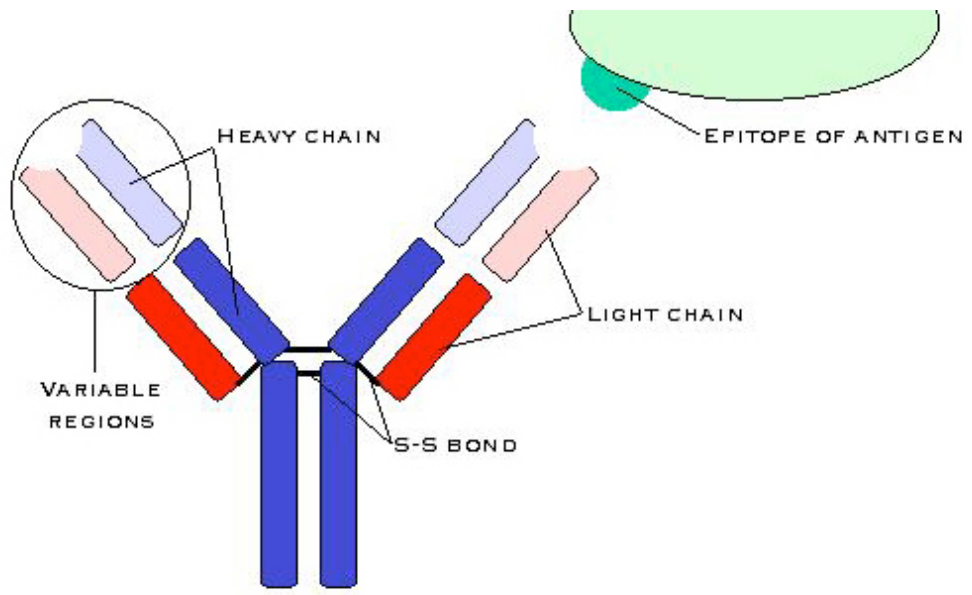
Glycerol

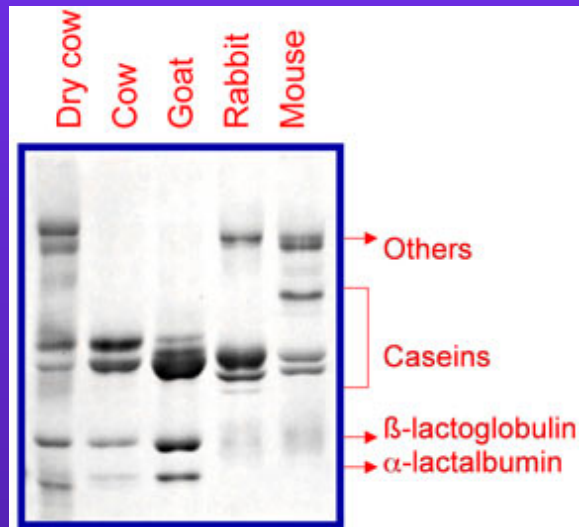
β -mercaptoethanol











Acrylamide gel separates proteins by size; biggest at top, smallest at bottom

Semi-Log Graph Paper

